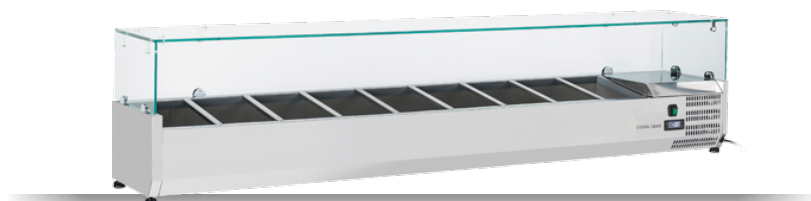




DETAILS



GENERAL FEATURES

| | |
|---|---|
| Refrigerated horizontale showcase (Pans GN1/4) | • |
| Stainless Steel exterior and interior | • |
| Static Cooling | • |
| Automatic compressor cycle defrost | • |
| Single copper pipe evaporator (No welding in the foaming) | • |
| Digital Thermostat | • |
| N.4 Adjustable feet | • |
| Spacer set included | • |
| GN1/4 Pans are not included with the unit | • |
| Temperated glass top | • |
| Energy efficiency class: - | • |

TECHNICAL SPECIFICATIONS

| | |
|----------------------------------|--------------|
| Capacity | 66 L |
| Temperature | +2° ~ +8°C |
| Consumption | 2 kWh/24h |
| Rated Power | 160 W |
| Noise level | 56 dB(A) |
| Net Weight | 51 Kg |
| Gross Weight | 82 Kg |
| External Dimensions (WxDxH mm) | 2000x335x440 |
| Internal Dimensions (WxDxH mm) | 1650x246x163 |
| Packaging dimensions (WxDxH mm) | 2140x405x460 |
| Loading quantities 20'/40'/40'HQ | 70/145/145 |

CERTIFICATION

CE  RoHS

PRODUCT DIMENSIONS

